

LYNX

**PARTS
ACCESSORIES
& APPAREL
2022**



IT TAKES SISU*

...TO BE FIRST ON AND LAST OFF SNOW. CONDITIONS ARE OFTEN FIERCE. AND WE WOULDN'T WANT IT ANY OTHER WAY.

WITH THE RIGHT GEAR SISU COMES EASIER. SINCE 1968 THE ORIGINAL LYNX GEAR HAS BEEN MADE TO ENDURE HEAVY USE FOR MANY YEARS AND ADVENTURES TO COME, JUST LIKE YOUR ORIGINAL LYNX SLED.



CLOTHING

- 4 Squadron
- 8 Technologies
- 10 Stamina
- 12 Racing
- 14 Quantum
- 16 Tec Layer
- 20 Active Wear
- 22 Sportswear
- 24 Headwear
- 25 Gloves
- 26 Helmets, goggles & lenses
- 29 Boots & Socks
- 30 Backcountry Accessories
- 32 Kids
- 32 Ogio Bags
- 27 How to measure

ACCESSORIES

- 34 Lynx Lineup 2022
- 35 Lynx Lineup - What's New
- 36 Snowmobile Models & Platforms 2021-2018
- 37 Bumpers
- 38 Skid plates, Protectors & Reinforcement
- 40 Wind Protection & Mirrors
- 42 Skis
- 43 Suspension
- 44 Storage
- 48 Ergonomics
- 50 Electrical
- 52 1+1 seats & accessories
- 53 59 & 69 Ranger Alpine Accessories
- 54 Covers
- 55 Trailing & covers
- 56 XPS Oils & Service
- 58 Parts & Performance
- 59 Cooling
- 59 Universal

**Sisu is a Finnish concept described as stoic determination, tenacity of purpose, grit, bravery, resilience, and hardiness and is held by Finns themselves to express their national character.*
- Wikipedia

© 2021 BRP Finland Oy. All rights reserved. ®, ™ and the BRP logo are trademarks of Bombardier Recreational Products Inc. or its affiliates. All other trademarks are the property of their respective owners. Because of our ongoing commitment to product quality and innovation, we reserve the right at any time to discontinue or change specifications, prices, designs, features, models or equipment without incurring obligation. Always consult your snowmobile dealer when selecting a snowmobile for your particular needs and carefully read and pay special attention to your Operator's Guide, safety instructions and to the safety labeling on your snowmobile. Always ride responsibly and safely. Always wear appropriate clothing, including a helmet. Always observe applicable local laws and regulations. Don't drink and drive. Units in pictures can be equipped with optional accessories.

BOONDOCKER



DS 3900
850 E-TEC

DS 3900
850 E-TEC

3900
600R E-TEC /
850 E-TEC

RE 3700 / RE 3900
850 E-TEC

XTERRAIN



RE 3700
900 ACE
TURBO R

BRUTAL 3900
850 E-TEC

3700 / 3900
600 EFI / 600R E-TEC

PRO 3900
600R E-TEC /
850 E-TEC

RE 3700
850 E-TEC

RE 3700 TURBO
900 ACE Turbo

ADVENTURE



SC
900 ACE

ADVENTURE
600 ACE

LX
600 ACE

SC
900 ACE

COMMANDER



COMMANDER
900 ACE TURBO

COMMANDER
600R E-TEC / 900 ACE /
900 ACE Turbo

GRAND TOURER
900 ACE / 900 ACE Turbo

LINEUP 2022

4 YEAR WARRANTY

RAVE



RE
850 E-TEC

RE
600R E-TEC / 850 E-TEC

49 RANGER



PRO
600R E-TEC

49 RANGER
600 ACE

PRO
600R E-TEC / 900 ACE

ST
900 ACE

59 RANGER



59 RANGER
600 EFI

59 RANGER
600 EFI / 600 ACE

ALPINE
900 ACE

69 RANGER



SNOWCRUISER
900 ACE TURBO

69 RANGER
900 ACE

ALPINE
900 ACE Turbo

SNOW CRUISER
900 ACE Turbo



IN BOOST WE TRUST

THE NEW Xterrain RE 900 ACE Turbo R

The thrill, freedom and joy of riding. Fierce and seamless performance. New generation suspension. Superior riding characteristics. The Xterrain RE 900 ACE Turbo R is the most powerful Lynx snowmobile. Ever.

WORKING CLASS HEROES

The most complete utility line-up ever

The all new 59 Ranger Alpine is a precision tool for ski resorts. Powered by the Rotax 900 ACE Turbo engine, the 69 Ranger Limited and Snow Cruiser bring performance to a new level in the super-wide track category.



WIDER COMFORT ZONE

The next generation of PPS rear suspension

PPS³ rear suspension takes the ride to a new era. It offers a wide comfort zone and increased performance. Featured in the Lynx Rave RE and Xterrain RE 900 ACE Turbo R models.

CORNERING WITH CONFIDENCE

THE NEW LFS+ front suspension

The new LFS+ front suspension provides high performance in aggressive riding. Long suspension travel and wide ski stance offer a whole new level of cornering stability and riding comfort. Featured in the Lynx Rave and Xterrain RE 900 ACE Turbo R models.



SPRING ONLY



RAVE ENDURO
600R E-TEC



BOONDOCKER RE
3700/3900 BLACK
850 E-TEC



BOONDOCKER DS
3900 BLACK
850 E-TEC



BOONDOCKER DS 4100
850 E-TEC



COMMANDER LIMITED
600R E-TEC / 900 ACE / 900 ACE Turbo



69 RANGER LIMITED
900 ACE Turbo

REFINED STEERING

THE NEW Blade XC+ ski

Stable, predictable and precise handling. Blade XC+ ski is designed for variable trail conditions. Featured in the Lynx Rave models.

WINTER IS OUR LIFESTYLE

THE NEW Lynx Active range

When snow turns to slush and trails turn to tracks, it's time to train. The original Lynx Active range sees you through off-season, dialling up the technical details that keep your engine running all year round.

STAY WARM AND DRY

Original Lynx Riding Gear

Gear that works in the wild. The original Lynx riding gear is made with the high-quality materials needed for demanding Nordic conditions. Designed and developed in Northern Finland.

MORE THAN 200 CONFIGURATIONS

LinQ accessory system

Comes as standard for most of the models. Lynx's LinQ accessory system is easy to use, fully integrated solution to your cargo needs.

SNOWMOBILE MODELS & PLATFORMS

2022

Radien

- Xterrain 3700 600 EFI
- Xterrain 3700 600R E-TEC
- Xterrain 3900 600 EFI
- Xterrain 3900 600R E-TEC
- Xterrain PRO 3900 600R E-TEC
- Xterrain PRO 3900 850 E-TEC
- Xterrain RE 3700 850 E-TEC
- BoonDocker 3900 600R E-TEC
- BoonDocker 3900 850 E-TEC
- BoonDocker RE 3700 850 E-TEC
- BoonDocker RE 3900 850 E-TEC
- BoonDocker DS 3900 850 E-TEC
- BoonDocker DS 4100 850 E-TEC
- Rave RE 600R E-TEC
- Rave RE 850 E-TEC
- Rave Enduro 600R E-TEC

Radien-X (400 mm)

- 49 Ranger 600 ACE
- 49 Ranger PRO 600R E-TEC
- 49 Ranger PRO 900 ACE
- 49 Ranger ST 900 ACE
- Xterrain RE 3700 900 ACE Turbo R
- Adventure 600 ACE
- Adventure LX 600 ACE
- Adventure SC 900 ACE

Radien-X (500 mm)

- Commander 600R E-TEC
- Commander 900 ACE
- Commander 900 ACE Turbo
- Commander Limited 600R E-TEC
- Commander Limited 900 ACE
- Commander Limited 900 ACE Turbo
- Commander Limited 900 ACE Turbo
- Commander Grand Tourer 900 ACE
- Commander Grand Tourer 900 ACE Turbo
- Xterrain Brutal 850 E-TEC
- 59 Ranger 600 ACE
- 59 Ranger 600 EFI
- 59 Ranger Alpine 900 ACE

Radien-X (600 mm)

- 69 Ranger 900 ACE
- 69 Ranger Limited 900 ACE Turbo
- 69 Ranger SnowCruiser 900 ACE Turbo
- 69 Ranger Alpine 900 ACE Turbo

2021

Radien

- Xterrain 3700 600 EFI
- Xterrain 3700 600R E-TEC
- Xterrain 3900 600R E-TEC
- Xterrain PRO 3900 600R E-TEC
- Xterrain PRO 3900 850 E-TEC
- Xterrain RE 3700 850 E-TEC
- Xterrain RE 3900 850 E-TEC
- BoonDocker 3900 600R E-TEC
- BoonDocker RE 3700 850 E-TEC
- BoonDocker RE 3900 850 E-TEC
- BoonDocker DS 3900 850 E-TEC
- BoonDocker DS 4100 850 E-TEC
- Rave RE 600R E-TEC
- Rave RE 850 E-TEC
- Rave Enduro 600R E-TEC

Radien-X (400 mm)

- 49 Ranger 600 ACE
- 49 Ranger PRO 600R E-TEC
- 49 Ranger PRO 900 ACE
- 49 Ranger ST 900 ACE
- Xterrain RE 3700 900 ACE Turbo
- Xtrim 600 ACE
- Xtrim LX 600 ACE
- Xtrim SC 900 ACE

Radien-X (500 mm)

- Commander 600R E-TEC
- Commander 900 ACE
- Commander 900 ACE Turbo
- Commander Limited 600R E-TEC
- Commander Limited 900 ACE
- Commander Limited 900 ACE Turbo
- Commander Grand Tourer 900 ACE
- Commander Grand Tourer 900 ACE Turbo
- Xterrain Brutal 850 E-TEC

Radien-X (600 mm)

- 59 Ranger 600 ACE
- 59 Ranger 600 EFI
- 69 Ranger 900 ACE
- 69 Ranger SnowCruiser 900 ACE
- 69 Ranger Alpine 900 ACE Turbo

2020

Radien

- Xterrain 3700 600R E-TEC
- Xterrain 3900 600R E-TEC
- Xterrain RE 3700 600R E-TEC
- Xterrain RE 3700 850 E-TEC
- Xterrain RE 3900 600R E-TEC
- Xterrain RE 3900 850 E-TEC
- BoonDocker 3900 600R E-TEC
- BoonDocker RE 3700 850 E-TEC
- BoonDocker RE 3900 850 E-TEC
- BoonDocker DS 3900 850 E-TEC
- BoonDocker DS 4100 850 E-TEC
- Xtrim RE 850 E-TEC
- Rave RE 600R E-TEC
- Rave RE 850 E-TEC
- Rave Enduro 600R E-TEC

Radien-X (400 mm)

- 49 Ranger 600 ACE
- 49 Ranger PRO 600R E-TEC
- 49 Ranger PRO 900 ACE
- 49 Ranger ST 900 ACE
- Xterrain RE 3700 900 ACE Turbo
- Xtrim 600 ACE
- Xtrim LX 600 ACE
- Xtrim SC 900 ACE

Radien-X (500 mm)

- Commander 600R E-TEC
- Commander 900 ACE
- Commander 900 ACE Turbo
- Commander Limited 600R E-TEC
- Commander Limited 900 ACE
- Commander Grand Tourer 900 ACE
- Commander Grand Tourer 900 ACE Turbo

XU

- 69 Ranger 900 ACE
- 69 Ranger SnowCruiser 900 ACE
- 69 Ranger Alpine 1200 4-TEC
- 59 YETI 600 ACE

2019

Radien

- Xterrain 3700 600R E-TEC
- Xterrain 3900 600R E-TEC
- Xterrain RE 3700 850 E-TEC
- Xterrain RE 3900 850 E-TEC
- BoonDocker RE 3700 850 E-TEC
- BoonDocker RE 3900 850 E-TEC
- BoonDocker DS 3900 850 E-TEC
- BoonDocker DS 4100 850 E-TEC
- Xtrim RE 850 E-TEC
- Rave RE 600R E-TEC
- Rave RE 850 E-TEC

Radien-X

- 49 Ranger PRO 600R E-TEC
- 49 Ranger PRO 900 ACE
- 49 Ranger ST 900 ACE
- Xtrim SC 900 ACE

REX²

- Xtrim 600 ACE
- 49 Ranger 600 ACE
- Adventure LX 600 ACE

XU

- Commander 900 ACE
- Commander 600 E-TEC
- Commander Limited 900 ACE
- Commander Limited 600 E-TEC
- Commander 800R E-TEC
- Commander Grand Tourer 900 ACE
- Commander Grand Tourer 1200 4-TEC
- 69 Ranger 900 ACE
- 69 Ranger SnowCruiser
- 69 Ranger Alpine 1200 4-TEC
- 59 YETI 600 ACE



BUMPERS



EXPLORER FRONT BUMPER

- 860201912 • Black
- 860201949 • White
- 860201957 • Viper Red
- 860201958 • Race Orange
- 860201959 • Sunburst yellow
- 860201960 • Manta Green

The Explorer front bumper gives the snowmobile additional protection and gives the front of the vehicle an attacking expression.

RADIEN / RADIEN-X 400 MM



ADVENTURE FRONT BUMPER

- 860202135 • Sunburst Yellow/Black
- 860201787 • Race Orange/Black
- 860201788 • Viper Red/Black
- 860201681 • Black/Black
- 860201474 • White/Black

RADIEN / RADIEN-X 400 MM

HEAVY DUTY FRONT BUMPER

860201819
Reinforced lightweight aluminum construction. Required for the installation of Front Bumper (860202120). Standard on Radien-X Commander & LTD, 69 Ranger & LTD, 59 & 69 Ranger Alpine models.

**RADIEN-X 500 MM
RADIEN-X 600 MM**



HITCH BUMPER

- 860201424 • For BoonDocker RE 3900 and Xterrain RE 3900 (until 2021)
- 860201250 • For BoonDocker RE 3700 (until 2021)
- 860201433 • For Rave RE (until 2019)
- 860201471 • For Xtrim RE and Rave RE (2020->)

Required for hitch use
RADIEN



ADVENTURE REAR BUMPER

- 860201683 • Black.
- 860201684 • Orange / Black. For Xtrim RE and Rave RE models (2020 ->)
- 860201685 • Black. For Rave RE (until 2019) and Rave Enduro.

Matches the Adventure Front Bumper.

RADIEN



EXPLORER REAR BUMPER

- 860201950 • 3700 • White
- 860201952 • 3700 • Black
- 860201954 • 3700 • Viper Red
- 860202007 • 3700 • Manta Green
- 860202099 • 3700 • Sunburst Yellow
- 860201951 • 3900 • White
- 860201953 • 3900 • Black
- 860201955 • 3900 • Viper Red
- 860202008 • 3900 • Manta Green
- 860202100 • 3900 • Sunburst Yellow

The Explorer rear bumper protects the rear part of the tunnel and has multiple attachment points, making it easy to attach cargo to the tunnel.

RADIEN / RADIEN-X 400 MM



FRONT BUMPER

- 860201858 • Viper Red
- 860201859 • Race Orange
- 860201444 • Black
- 860201445 • White

Easy-install bumper changes the appearance of your sled in minutes

RADIEN / RADIEN-X 400 MM



FRONT BUMPER, BLACK

- 860202120 • 500 mm & 600 mm
- 860202254 • 400 mm

Add extra protection and attitude with this front bumper. 860202120 needs the HD front bumper 860201819.

RADIEN-X



SIDE BUMPER

- 860202189 • Black
- 860202228 • Orange

- 860202190 • Black

Protects side panels while still allowing access to them. Need also front bumper 860202120.

**RADIEN-X 500 MM
RADIEN-X 600 MM**



SIDE BUMPER

- 860202255 • Black

Protects side panels while still allowing access to them. Need also front bumper 860202254.

RADIEN-X 400 MM



XC FRONT BUMPER

- 860201615 • Black

Add extra protection and attitude with this bumper.

RADIEN / RADIEN-X 400 MM

SKID PLATES, PROTECTORS & REINFORCEMENT



38 SKID PLATES, PROTECTORS & REINFORCEMENT



NEW

REAR SKID PLATE

860202303 Extra underbelly protection. Protects components such as brakes and gearbox from impacts. Available for models with fullbody skid plate and short chaincase.

RADIEN



BRAKE RESERVOIR PROTECTOR

860202171 Increases impact protection for the brake reservoir. Window to see fluid level. Cast aluminum construction. Standard in 2022 BoonDocker RE & DS models.

**RADIEN
(ONLY MODELS WITH STANDARD CONTROLS ON HANDLEBAR)**



HD GEARBOX AND BRAKE DISK PROTECTOR KIT

860201361 • Only available for A-arm models

XU



HEAVY DUTY SKID PLATE

860202095 • Black

RADIEN-X 500 MM



HEAVY DUTY SKID PLATE

860202176

Injection molded plate with smooth bottom surface to reduce drag. Wide shape for full protection and maximum flotation. Attachment kit included.

RADIEN-X 600 MM



LING REMOVABLE SNOWFLAP

860201515

Innovative way to remove snowflap. Can be installed with stock flap. Stows on the tunnel when not in use. Does not fit on Boondocker RE (2022 and up) & DS and Xterrain RE.

RADIEN



RAIL REINFORCEMENT

860201870 • PPS² rear suspension
860202462 • PPS³ rear suspension

Fits all Radien models with PPS² or PPS³ rear suspension.

RADIEN



REAR SKIDPLATE

860202067 • Extra underbelly protection.

Protects components such as brakes and gearbox from impacts. Available for models with fullbody skid plate and long chaincase.

RADIEN



SKID PLATE

860200552 • White
860200549 • Black

Provides additional underbelly protection in off trail conditions. Helps glide on snow and prevents snow from sticking to the frame. Also suitable for A-arms with protectors. Does not fit on 59 and 69 YETI.

XU

39 SKID PLATES, PROTECTORS & REINFORCEMENT



FULLBODY SKIDPLATE

860202023 • Cyan
860202024 • Race Orange
860201647 • Manta Green
860201646 • Sunburst Yellow
860201631 • Black
860201641 • Red
860201642 • White

Injection molded plate with smooth bottom surface to reduce drag. 4mm thick high impact resistance polypropylene for durability.

Wide shape for full protection and maximum flotation.

Attachment kit included

RADIEN



HEAVY-DUTY SKID PLATE

860202064 • Viper Red
860202065 • Race Orange
860201866 • Black
860201867 • White

Full coverage skid plate. Maximum extra wide protection for tough conditions. Injection molded assures a perfect fit and easy installation. Attachment kit included.

RADIEN-X 400 MM



TOW HITCH

860202116 • Available for models with a heavy-duty bumper.
860202117 • Available for models with a Explorer rear bumper.
860202258 • Available for Radien-X models without rear bumper
Does not fit for 2018-2021 BoonDocker DS models and any 2022 BoonDocker models.

REX / REX² / RADIEN / RADIEN-X



WINCH KIT

860202097

Ergonomic clutch handle. Rugged all-steel gears and bushings, provides more torque and longer life. Can be attached to rear of the vehicle's hitch or on HD front bumper (860202120 or 860202254). Automatic 100% load-holding brake. Sealed solenoid for all weather protection. Corded 10 ft. (3m) weather sealed hand-held remote. Pulling strength capability of 2,000 lb (907 kg). Synthetic rope. Onepiece rope guide. EC Compliant.

**RADIEN-X 500 MM
RADIEN-X 600 MM**

TOWING

SEE MORE PRODUCTS IN BRPPAC.COM

SEE MORE PRODUCTS IN BRPPAC.COM



ADJUSTABLE WINDSHIELD HIGH TO EXTRA HIGH

860201782
59 cm - 69 cm.
RADIEN / RADIEN-X

ADJUSTABLE WINDSHIELD LOW TO MEDIUM

860201820
Quickly change your level of wind protection with the flip of a lever. Compatible with Glove Box Extension (860201523). Side Deflectors and Windshield Support not included. Adjustable range of 35.6 cm to 43.2 cm.
RADIEN / RADIEN-X

ADJUSTABLE WINDSHIELD MEDIUM TO HIGH

860201493
48,5 - 58,5 cm high.
RADIEN / RADIEN-X

WINDSHIELD, ULTRA LOW

860201259
20 cm high.
RADIEN / RADIEN-X



WINDSHIELD, LOW

860202262
36 cm high. Includes windshield support.
RADIEN / RADIEN-X

WINDSHIELD, MEDIUM

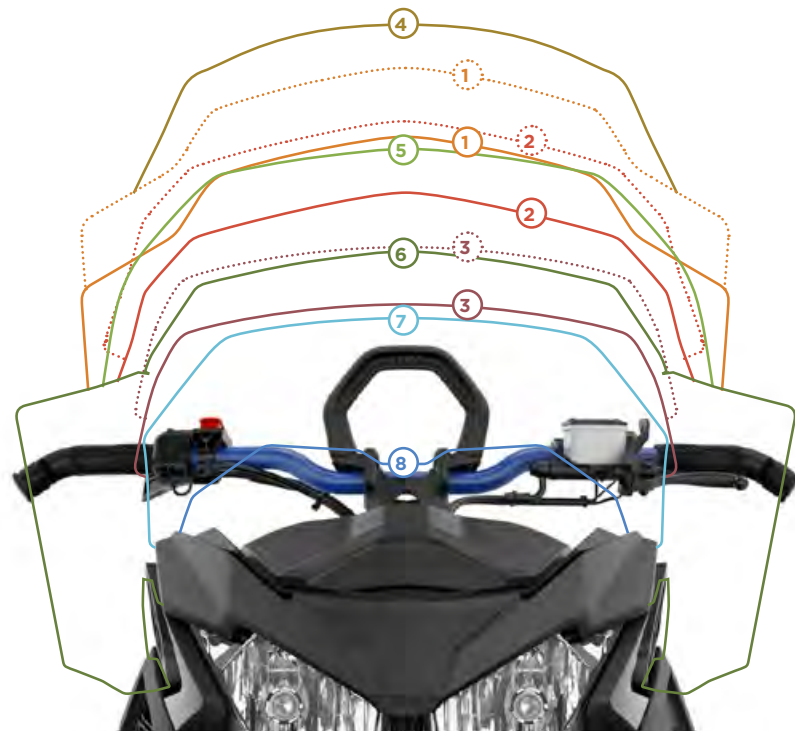
860201864
43 cm high. With side deflectors and windshield support kit.
RADIEN / RADIEN-X

WINDSHIELD, MEDIUM

860201547
43 cm high. Includes windshield support.
RADIEN / RADIEN-X

WINDSHIELD, EXTRA HIGH

860202257
63,5 cm high. With side deflectors and windshield support kit.
RADIEN / RADIEN-X



EASILY CHOOSE YOUR IDEAL WINDSHIELD

ADJUSTABLE WINDSHIELDS

	Lowest Position	Highest Position
1 HIGH TO EXTRA HIGH	58.5 cm	63.5 cm
2 MEDIUM TO HIGH	48.5 cm	58.5 cm
3 LOW TO MEDIUM	37 cm	43 cm

WINDSHIELDS

	Height
4 ULTRA HIGH	27.5" (70 cm)
5 HIGH	23" (58.5 cm)
6 MEDIUM	17" (43 cm)
7 LOW	14" (36 cm)
8 ULTRA LOW	8" (20 cm)

SEE MORE PRODUCTS IN BRPPAC.COM



PIVOTING MIRROR KIT FOR HANDGUARDS

860200893
• Perfectly integrated design and style.
• Mirrors fold away when not in use for easy storage or when covering vehicle.
• Sold in pairs
RADIEN / RADIEN-X / REX / REX²

MIRROR KIT, ROUND

517305787
XU



FLEXIBLE MOUNTAIN HANDGUARDS

860201591 • Black
Designed to withstand roll overs and tough boondocking conditions
RADIEN / RADIEN-X / REX / REX²



MIRROR KIT

619400009
Sold individually.

MIRROR KIT

517306490



HANDLEBAR AIR DEFLECTORS

860201383
Black (transparent)
RADIEN / RADIEN-X / REX / REX²



PASSENGER MUFFS FOR 1 + 1 SEAT

860202114
Ultra warm passenger muffs with fleece liner. Designed for extreme cold conditions. Easy to remove in warmer weather. Inner skeleton allows muff to keep its shape and gives more space for hand movement. Fits also LinQ 2-up seat (860202375).

RADIEN-X 500 MM
RADIEN-X 600 MM



HANDLEBAR MUFFS

619590211
RADIEN / REX / REX² / XU



HANDLEBAR PAD

860201680
RADIEN





SKIS & SUSPENSION



NEW

BLADE XC+ SKIS

860202460 • Black
860202498 • Viper Red

The new Blade XC+ ski is longer, narrower and lighter than its predecessor and it provides

great stability. Thanks to its renewed structure, the ski maintains its qualities in variable snow conditions consistently.

RADIEN / RADIEN-X



BLADE DS+ SKIS

860202265 • Cyan
860202011 • Black
860202012 • White
860202013 • Viper Red
860202015 • Sunburst Yellow
860202016 • Manta Green
860202017 • True Blue
860202019 • Race Orange

The Blade DS+ ski improves the handling of the Lynx snowmobiles in deep snow. The long, redesigned ski makes the snowmobile more predictable to steer, even when turning in deep snow, and it improves handling when side hilling.

RADIEN / RADIEN-X / REX²



NEW

BLADE DS+ LINER KIT

860202020

Ski liners for the Blade DS ski. Full wide symmetrical version for extreme deep snow applications. Sold in pairs.

RADIEN / RADIEN-X



BLADE XC SKIS

860201655 • Black
860201656 • Sunburst Yellow
860201657 • Blue
860201658 • Lime Green
860201659 • Manta Green
860201660 • Red
860201661 • White
860201662 • Grey
860201946 • Race Orange

It is the perfect combination of flotation in deep snow and sharp steering on hard packed snow. Sold in pairs.

RADIEN / RADIEN-X / REX / REX² / XU

BLADE SKI HANDLE

505072976 • Black
505073107 • Yellow
505073108 • White
505073388 • Lava Red
505073513 • Orange
505073651 • Race Orange
505073665 • Sunburst Yellow
505073109 • Viper Red

RADIEN / RADIEN-X / REX / REX² / XU



NEW

KYB 36 R FRONT SHOCK KIT

860202370

For 996 mm ski stance. Aluminium shocks with rebound adjustment.

RADIEN-X



FRONT SUSPENSION LFS KIT

860201588

Adjustable width 975 mm - 1,019 mm. Includes KYB 36R shocks and springs.

RADIEN



NEW

FOX OIL, 1.5 ZERO QS3-QSR

860202275

Fits Boondocker DS models, for ski stance 921 mm.

RADIEN



CURVED A-ARMS

860201679 • 921 mm
860202345 • 996 mm NEW

Redesigned to be more effective. Provides more clearance for less drag in deep snow. Reduces damage from objects hidden below the snow. Quick-disconnect sway bar kit included.

RADIEN / RADIEN-X



NEW

FOX FLOAT 3 EVOL QS3-QSR

860202277

Fits Boondocker DS models, for ski stance 921 mm.

RADIEN

EASYRIDE REAR END LOCKING PIN

860201948 • Radien-X 500 mm
860202068 • Radien-X 400 mm

The simple mechanism makes it easy to lock and unlock the Easyride rear end movement for different application needs.

**RADIEN-X 400 MM
RADIEN-X 500 MM**

STORAGE



NEW

UNIVERSAL LINQ RACK

860202208 • for Lynx models
860202357 • other brands

This Universal Rack can make generic accessories LinQ compatible. Allows a multitude of products and configurations on LinQ tunnels

Requires LinQ Cargo Base Kit (860201806 on 400 mm [2021 and prior models] or 860202482 on 500 & 600 mm).

RADIEN / RADIEN-X

NEW

LUGGAGE RACK

860202311

Maximizes tunnel cargo capacity.

**RADIEN-X 500 MM
RADIEN-X 600 MM**

NEW

LINQ CARRIER SNOWMOBILE CARGO SLEIGH

860202381

New modified LinQ Carrier Sleigh. This hitech sled has independent suspension, which guarantees a smooth ride for your cargo as well. 60 kg cargo capacity. Compatible with LinQ accessories e.g. Cargo Box 135 liter + Cargo box 16 liter. The sled has four lashing eyes so you can strap the load. The new feature would be that you have to build your top box with the LinQ base kit as in the picture attached.

RADIEN / RADIEN-X



NEW

LINQ MODULAR CARGO BOX

715005494

10 liter. Allows mix and match to fit different needs. Heavy duty construction for durability. Weather resistant sealed lid.

Requires LinQ Cargo Base Kit (860201806 on 400 mm [2021 and prior models] or 860202482 on 500 & 600 mm).

RADIEN / RADIEN-X

LINQ REAR CARGO RACK

860201800

Replaces passenger seat for extra cargo capacity. Simple attachment. Retains underseat access with clever hinge system. Allows use of more LinQ accessories.

**RADIEN-X 500 MM
RADIEN-X 600 MM**

NEW

LINQ TRAIL BAG

860201986

860202383 • cover lid only
Premium bag with our highest level of waterproofing. Watertight zipper (TiZip). Map holder & quick access storage compartment on lid. Mesh pocket under the lid for easy, quick access to smaller items. Brightly colored interior makes locating items easier. Lightweight and mounts securely using one set of LinQ anchors. Expandable 9 to 30 L capacity. Requires LinQ Cargo Base Kit (860201806 on 400 mm [2021 and prior models] or 860202482 on 500 & 600 mm).

RADIEN / RADIEN-X

LINQ TRAILER SLEIGH DELUXE

860201938

LinQ accessories install on top and inside. 2 part removable cover. Rain resistant. Carbide ready (860201044). Slots for dividers precast in. Dimensions 206*84*4cm (P*L*K). Volume 485 L. Spring dampened pull bar.

RADIEN / RADIEN-X



LINQ CARGO BOX

860202446 • Black

Can be used on all Radien & Radien-X sleds. Optional LinQ mounts can be added on top for even more capacity.

RADIEN / RADIEN-X

LINQ CARGO BOX, LARGE

860202442

Volume 40 L. Only available for 3700 mm-+ models.

RADIEN / RADIEN-X / REX / REX²

LINQ UTILITY CARGO BOX

860202085

Massive 135-liter capacity. Rugged and tough rotomolded plastic construction. 4 LinQ anchors can be added on top of the box for additional storage. 4 fixation hook points to secure cargo in the box and 4 molded handles features for ease of transportation. Slots molded in for plywood dividers. Integrated saw and axe holders. Removable/lockable lid. Dedicated hooks for bungee cords or elastic net to expand storage capacity on top of the box.

**RADIEN-X 500 MM
RADIEN-X 600 MM**



LINQ CARGO BOX

860202448

90 L capacity. Fits 3700 and up.

RADIEN / RADIEN-X / REX / REX²



LINQ CARGO BOX BAG

860201635 • Black

Fits perfectly in the LinQ Cargo Box (860202446) Easy to take everything with you on arrival.

RADIEN / RADIEN-X



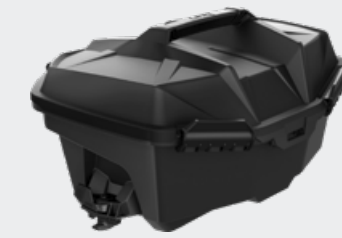
CARGO BOX

619560023

511000730 Railing
511000729 Lock

75 liter capacity.

XU



LINQ TOOL BOX

715008111

19 L capacity.

RADIEN / RADIEN-X / REX / REX²



REAR CARGO BOX 70 L

860202416

70-liter capacity. Provides additional secure storage. Injection molded plastic. Optional LinQ mounts can be added on top for even more capacity. Convenient flip top provides easy access to stored goods. Standard on Commander Limited and 69 Ranger Limited models.

**RADIEN-X 500 MM
RADIEN-X 600 MM**



THERMAL BOX

219400964

16 liter. High quality foam insulation for optimal performance hot or cold. Does not fit with 1+1 Backrest.

RADIEN / RADIEN-X



LARGE LINQ TUNNEL BAG 21 L

860202449

Can be installed on top of Stackable Fuel caddy or behind seat.

RADIEN / RADIEN-X



LINQ DEEP SNOW PRO BAG

860202456

860202383 • cover lid only
Watertight (with TiZip). Our highest level of waterproofing. Lightweight. Includes one set of LinQ fasteners. Fits position 1, 2 and on top of Fuel Caddy.

RADIEN



LINQ COMBO BAG

860201939

Replaces passenger seat in seconds for additional storage. Allows access to storage underneath. Water resistant. 52L capacity. Works with 135L LinQ Utility Cargo Box (860202085).

**RADIEN-X 500 MM
RADIEN-X 600 MM**



LINQ DRY BAG, 40 L

715008110

Fully waterproof roll-top design secures gear tightly. 40-liter of adjustable capacity. Heavy-duty rigid plastic base. Foam lined bottom for additional protection. Integrated handle for easy transportation on/off the vehicle.

RADIEN / RADIEN-X



137" TUNNEL BAG ADVENTURE

860202444

40-liter capacity.

RADIEN / RADIEN-X



LINQ SPORT BAG

860202447

17 L capacity.

RADIEN / RADIEN-X / REX / REX²



HANDLEBAR BAG

860201565

2.3 liter capacity. Fits Radien models without strap.

RADIEN / RADIEN-X



HANDLEBAR BAG, SMALL

860200920 • Small, volume 3 L

RADIEN / RADIEN-X / REX / REX² / XU



LINQ JERRY CAN

860202246

Volume 15 L. REX² models require also LinQ Shim Kit 860201432.

RADIEN / RADIEN-X / REX²

LINQ JERRY CAN

860200733

Volume 11 L.

RADIEN / RADIEN-X REX / REX² / XU

LINQ JERRY CAN

860202247 • 3.78 Liter capacity.

Smaller size for less weight. Can be used in position 1 or 2. Easy pour design for sleds or powertools.

RADIEN / RADIEN-X

OIL CADDY FOR STACKABLE JERRY CAN

860202445

3.78 liter.

RADIEN / RADIEN-X



NEW

LINQ LOCK KIT

860201968 • 1 pair
860202478 • 2 pairs

Ability to lock all new and pre-existing LinQ accessories. Can be easily transferred from LinQ accessory to another.

RADIEN / RADIEN-X



LINQ ANCHORS RETRO FIT KIT

860202482

Revised hardware to fit MultiMount Plate.

RADIEN-X 500 MM RADIEN-X 600 MM



LINQ QUICK ATTACHMENT KIT

860201806

RADIEN / RADIEN-X / REX / REX²



LINQ TOOL HOLDER

860201846

Designed for universal applications. Convenient swivel latch allows tools like a shovel to be stored in multiple positions.

RADIEN-X 500 MM RADIEN-X 600 MM



SHOVEL HOLDER BRACKET

860201979 all models with flat mounting surface
860202287 Radien-X models with rear rack

Securely mounts on side of the tunnel.

RADIEN-X 500 MM



12-VOLT PLUG FOR LINQ MULTIMOUNT PLATE

860201888

Standard 12V outlet for the rear of the vehicle.

RADIEN-X 500 MM RADIEN-X 600 MM



GLOVEBOX EXTENSION

860201523

4-liter capacity.

RADIEN / RADIEN-X



GLOVEBOX LINER

860201270

RADIEN / RADIEN-X



CELL PHONE HOLDER

860202072

Doubles the storage with additional 4 liter capacity. Can be used with or without windshield. Does not include cell phone. Available also the replacement door for glovebox, 860202169, sold separately.

RADIEN / RADIEN-X



LINQ SLIM WATERPROOF TUNNEL BAG - 26 L

860202451

Rigid bottom and top design. Allows storage of removable snow flap. Waterproof inner roll top. Shovel can be stored while assembled on top of the bag. 16 to 26 liter capacity. LinQ Cargo Base Kit (860201806) included. Now fits in position 1 & 2 and 2 & 3. 137" and longer

RADIEN / RADIEN-X



LINQ ICE AUGER HOLDER

860201828

Securely mounts to right side of vehicle. Easy on/off and installation. Retains full function of LinQ accessories. Handles augers with up to 10" blades.

RADIEN-X 500 MM RADIEN-X 600 MM



LINQ AXE HOLDER

860201854

Securely mounts on either sides of the tunnel using LinQ anchors. Universal sizing to fit a wide variety of axes.

RADIEN-X 500 MM RADIEN-X 600 MM



CHAIN SAW HOLDER

860202071

Securely mounts to rear of vehicle. Easy on/off and installation. Retains full function of LinQ accessories, including cargo box

RADIEN-X 500 MM RADIEN-X 600 MM



SEAT BOX FOR DEEP SNOW SEAT

860202028

Low profile integrated storage box utilizing the battery area. Added storage capacity of 1.5 L with battery and 6 L for a vehicle without the battery. Same height as battery cover.

RADIEN



STORAGE



GRAB HANDLE LOW

860202073
Provides more freedom of movement in active riding. Not compatible with Handlebar Bag (860201565).
RADIEN / RADIEN-X



HANDLEBAR GRIPS

860201878 • Black
2 pieces.
RADIEN / RADIEN-X



ADJUSTABLE RISER

860201589 • 150-210 mm.
For straight handlebars.
Fits on BoonDocker models.

860201590 • 125-160 mm.
For straight handlebars.
Fits on Rave RE and Xtrim RE models.
RADIEN

EXTENSION KIT

860201428 • 190 mm.
For Straight Handlebar. Works with all stock wiring and cables. Fits on BoonDocker models

860201393 • 165 mm.
For Straight Handlebar. Cable included. Fits on Rave RE and Xtrim RE models

860201427 • 120 mm.
For Straight Handlebar. Works with all stock wiring and cables. Fits on Rave RE and Xtrim RE models
RADIEN



SIDE SUPPORT FOOT KIT

860201876
RADIEN



FIXED TOE HOLD

860201875
For 3500 and up.
RADIEN

FIXED RISER BLOCK

860201874
90 mm
RADIEN / RADIEN-X

RS HOOD KIT

860202244
Lightweight hood (only for Racing purposes). Polypropylene construction.
RADIEN

RIDERS FOOT RAMP

860201877
Not for Rave RE model.
RADIEN

ERGONOMICS



ELECTRICAL



GARMIN ZUMO 590LM GPS
860201556
Handlebar mounting 619590259.
RADIEN / RADIEN-X



GARMIN MONTANA 680T GPS KIT
860201417
REX / REX² / XU



UNIVERSAL GPS MOUNT
860201018
XU

MONTANA GPS SUPPORT
860201029
Radien models need adapter 515178980.
RADIEN / REX²



AMBIENT AIR & ENGINE TEMPERATURE MODULE
860201362
RADIEN



CTEK BRP 5.0 CHARGER
860200997
RADIEN / RADIEN-X / REX / REX² / XU



LINQ WORKING LIGHT
860201849
Convenient LinQ mount with swivel allows you to adjust as needed. Ultra bright 1000 Lumen output. Works when at idle. Requires 12V outlet (860201888).
RADIEN-X



HIGH BEAM AUXILIARY LED LIGHT
860201956
RADIEN / RADIEN-X



USB POWER OUTLET KIT
860201261
Includes wiring harness.
RADIEN / RADIEN-X



POWER OUTLET
860201423 • Wiring harness included.
RADIEN / RADIEN-X
861507200 • Wiring harness not included.
REX / REX² / XU



REWIND STARTER KIT
860201410
RADIEN



ELECTRIC STARTER KIT
860201282
Start your sled with the simple push of a button. Battery cover with support (860201720) also required.
RADIEN



HEATED VISOR KIT
860201283
Wiring harness included.
RADIEN / RADIEN-X
860201234 • front
619590074 • rear for passenger
REX / REX² / XU

BLOCK HEATER
860201980
Improves starting in extreme cold temperatures. Fits only models with 600 ACE (2020->) 900 ACE and 900 ACE Turbo engines. Installation tool required (520002260, sold separately).
RADIEN-X



ENGINE HEATER KIT
860200367
Available for the 600 ACE, the 900 ACE and the 1200 4-TEC.
REX / REX² / XU



3W HEATER
515176786
REX / REX² / XU



LEARNING KEY
860201872
Radien-X with Rotax 4-stroke engines.
RADIEN-X



RF DESS SPARE KEY
515177742
(from 2015)
RADIEN / RADIEN-X / REX²



E-LING
860202131
Combines both DESS cord and heated shield cord into one. Same type of magnetic connector as used on OXYGEN helmet. Easily converts standard DESS cord into a powered cord. Increases freedom of movement. Easy and quick connection that self locates. Works with any 12V heated shield.
RADIEN / RADIEN-X



RCA ADAPTOR PLUG KIT
515176794
Y plug power splitter lets you connect 2 heating components or 1 heater and 1 electrical visor.
RADIEN / RADIEN-X / REX² / XU



1 + 1 LUXUS SEAT
619400068
XU



1 + 1 SEAT WITH BACKREST
860202093
RADIEN-X 500 MM



2 UP SEAT WITH BACKREST
860202375
Requires 860201720 battery cover.
RADIEN / RADIEN-X 400 MM



HEATED PASSENGER SEAT AND GRIPS
860202094
Premium passenger seat with backrest and heated grips. Adds warmth in the coldest conditions.
RADIEN-X 500 MM
RADIEN-X 600 MM



DEEP SNOW PRO SEAT
860202264
Provides greater freedom of movement. Low, narrow and light seat. Integrated grip areas.
RADIEN
RADIEN-X 400 MM



HEATED DRIVER SEAT
860202261
Adds warmth in the coldest conditions.
RADIEN-X 500 MM
RADIEN-X 600 MM



2 UP LIGHT SEAT
860201862
Requires 860201720 battery cover.
RADIEN / RADIEN-X 400 MM

HEATED GRIPS FOR LINQ 2 UP SEAT
860201840
Allow your passenger to ride in comfort in all conditions. Easy unplug.
RADIEN / RADIEN-X 400 MM



NEW

WARNING SIGNAL FOR ALPINE
860202312
Push the button warning signal.
59 & 69 RANGER ALPINE

WARNING LIGHTS
860202496
Includes 2 LED lights to be installed at front and 2 at rear of the snowmobile.
59 & 69 RANGER ALPINE

WORKING LIGHT KIT
860202084
Working light and warning lights for beacon bar (beacon bar not included).
59 & 69 RANGER ALPINE



A-ARM WIDENING KIT
860202194
Provides more stability when turning on steep slopes. Adds 200 mm of width to the front suspension.
59 & 69 RANGER ALPINE



CARGO BOX
860202080
Large cargo box, 180 L for mounting on the rear rack.
69 RANGER ALPINE



1+2 SEAT
860202502
2 up seat specifically designed for 59 & 69 Ranger Alpine model, allowing you to ride 3-up.
59 & 69 RANGER ALPINE

BEACON BAR
860202395
Sturdy bar for lights (lights not included).
59 & 69 RANGER ALPINE

SKI & SNOWBOARD RACK
860202082
Rack for two pairs of skis and a snowboard.
69 RANGER ALPINE

HILL BRAKE
860202078 • 69 Ranger Alpine
860202364 • 59 Ranger Alpine **NEW**
Advanced hill brake application for safe stopping on steep hills. Specifically designed for 69 Ranger Alpine model.
59 & 69 RANGER ALPINE



BATTERY COVER
860201720
Use in conjunction with 2 up light seat 860201862 and 1 + 1 Seat with backrest 860202375.
RADIEN / RADIEN-X 400 MM



1 + 1 SEAT ELECTRIC VISOR / HEATED BOOTS WIRE HARNESS
860201981
Works in conjunction with the new 1 + 1 heated grips (860201840). Provides 2 extra connections: one connection for electric visor and one connection for heated boots.
RADIEN / RADIEN-X

1+1 SEATS & ACCESSORIES

59 & 69 RANGER ALPINE ACCESSORIES

SEE MORE PRODUCTS IN BRPPAC.COM



COVERS

COVER, FOR 1+1 SEAT

860201869
RADIEN-X 400 MM



COVER

860202252
Provide protection for your snowmobile. Easy to install and stays on even in hard wind. Fits with one and two up seats.

RADIEN-X 600 MM

SLED COVER

860201996
Provide protection for your snowmobile. Easy to install and stays on even in hard wind.
RADIEN-X 500 MM

SLED COVER

860201535 • No windshield to medium.
RADIEN

SLED COVER FOR 1+1 SEAT

860201534
With medium and higher windshield.
RADIEN

SLED COVER FOR 1+1 SEAT

860201997
Provide protection for your snowmobile. Easy to install and stays on even in hard wind.
RADIEN-X 500 MM

WHITE ARMY COVER

21149
XU

SLED COVER

860201868 • With medium and higher windshield.
RADIEN-X 400 MM

SLED COVER

860201379
XU



THE MOST VERSATILE SNOWMOBILE TRAILER ON THE MARKET. ASK YOUR LOCAL DEALER FOR MORE INFORMATION.

TRAILING & COVERS



SUPERGLIDE II WIDE

860201592
• Allows sled skis to glide with ease.
• Specifically designed traction knobs provide improved traction for your feet.
• Oval mounting channels and custom shoulder screws prevent warping by allowing for expansion and contraction that results from varying temperature.
• Exclusive venting: protect the deck of your trailer from moisture damage.
• Each box contains 8 pieces (343 mm x 749 mm).
• Comes with 72 specially coated screws with grommets.
• Total length of 6 m.



SUPERGLIDE II PRO

860201216
• No more ripping up the plywood on your trailer.
• Allows skis to glide with ease.
• Traction knobs incorporated for better traction.
• Exclusive venting, protects the deck of your trailer from moisture damage.
• Total length of 6 m.



SUPERGLIDE EDGE RAIL TRIM

860201217
To secure Superglides on ramps or decks leaving an encapsulated finished edge



SUPERCLAMP II

860200950
• Innovative trailer tie-down system.
• Silicone rubber pads to protect your skis.
• Front and middle handles allowing easy manoeuvrability.
• Pad lock compatible, becomes a theft deterrent.
• Tension adjustment knob - fits all snowmobiles.
• Comes with screw style deck hook



SUPERCLAMP REAR WITH SUPERTRAC

860201425
• Snowmobile tie-down system for rail.
• Silicone rubber pads to protect snowmobile suspension skid.
• Tension adjustment knob - fits all snowmobiles.
• 300 mm Supertrac kit included.
• Pad lock compatible, becomes a theft deterrent.



SUPER TRACTION GRID

860201593
• Super Traction Grids' strategic grid pattern provides incredible grip and accomodates all snowmobile tracks, even with paddles or studded.
• Each box contains 4 pieces (209 mm x 762 mm) and hardware.



BRP STRAPS

295100389 Quick Lock
860200447 Ratchet Lock
Heavy-duty cargo straps. Adjustable length between 0.3 m and 1.5 m, hooks at both ends.



SUPERTRAC DECK HOOK

860201416
• For Supertrac.
• Adjustable and removable hook



SCREW STYLE DECK HOOK

860200994
• Most common.
• Comes standard with front Superclamps.
• Screws into the existing hole where you would screw the old style bar and crank into or make your own holes



T-STYLE DECK HOOK

860200995



SUPERTRAC KIT

860201413 • 12" (30 cm)
860201414 • 24" (61 cm)
860201415 • 48" (122 cm)
Includes: 1 piece Supertrac, 1 Supertrac deck hook, 2 end caps and all mounting hardware.

LONG LIVE ADVENTURE

XPS Lubricants and Care products are expertly engineered to extend the life of your ride.

We pair the best engineers with the best chemists to create products that exceed tomorrow's technology with the knowledge from an insiders standpoint.

No Shortcuts

Tested on all engine platforms and all materials used in manufacturing today's powersports vehicles - not just one or two. We benchmarked against the best in every category to ensure XPS products meet or exceed each before offering them to you.

They perform and protect in the harshest conditions.

From desert heat to saltwater corrosion to the coldest temperatures on earth - XPS products have been proven to protect and perform.

To learn more about the complete line-up visit
xpslubricants.com



XPS 2-STROKE FULL SYNTHETIC OIL

779281 1 quart / 946 ml
779282 • 1 US gallon / 3.785 L
779283 • 2.5 US gallons / 9.46 L
Specifically engineered to meet the unique needs of Rotax.



XPS 4-STROKE EXTREME COLD GRADE SYNTHETIC OIL

779294 • 1 quart / 946 ml
779295 • 1 US gallon / 3.785 L
BRP's Rotax 4-stroke ACE and 1203 engines.



XPS 4-STROKE SYNTHETIC OIL

779286 • 1 quart / 946 ml
779287 • 1 US gallon / 3.785 L
The best choice for any BRP vehicle with a 4-stroke engine used in winter cold condition.



XPS 2T SNOWMOBILE PREMIUM MINERAL OIL

779277 • 3.785 L
779278 • 9.46 L
779279 • 18.92 L
Powersport formula with premium anti-wear and anti-corrosion additives.



XPS 2T SNOWMOBILE SYNTHETIC BLEND OIL

779649 • 3.785 L
Designed for all oil injection or pre-mix 2-stroke snowmobiles with electronic fuel injection or carbureted engines.



XPS BRAKE FLUID

779207 • 355 ml
Exceeds all DOT3 and DOT4 brake fluid requirements.



XPS SYNTHETIC CHAINCASE OIL

779185 • 12 oz. / 355 ml
Specifically developed for high-performance Lynx models, it represents the best in state-of-the-art chaincase lubrication



XPS SYNCHROMESH SYNTHETIC TRANSMISSION OIL

779211 • 24 oz. / 710 ml
Uses a unique combination of synthetic base stocks.



XPS PRE-MIXED ANTIFREEZE/COOLANT

619590204
5 years (orange) - 1 quart / 946 ml
Ready-to-use pre-mix. Longlife, 5-year formula specially formulated for BRP vehicles.



XPS CARBURATOR CLEANER

779184 • 12 oz. / 355 ml
Complete fuel treatment specially formulated to prevent small engine problems caused by Ethanol-blended fuels.



XPS HIGH PERFORMANCE SUSPENSION FLUID

779219 • 1 quart / 946 ml
Engineered viscosity for optimized performance in cold weather conditions.



XPS ANTI-CORROSIVE LUBRICANT

619590093 • 12 oz. / 340 g
A multipurpose lubricant that can also be used to prevent rust, corrosion and moisture intrusion.



XPS FUEL STABILIZER

779183 • 8 oz. / 240 ml
Ethanol-compatible and will stabilize fuel in your tank to keep it from breaking down and causing hard starting, throttle hesitation and poor run quality.



XPS STORAGE OIL

619590094 • 340 g
High-performance fogging oil designed to protect internal engine parts from rust and corrosion.



OIL FILTER

Use on all Lynx engines. See your dealer for details

OIL FILL SUPPORT RING

519000296



XPS MICROFIBER TOWELS

219701759 • Pack of 2
Made from extremely fine fibers whose soft surfaces have been perfected for use in drying and polishing.



PARTS & PERFORMANCE



MAINTENANCE KIT FOR DRIVE PULLEY

REX, REX², XU
415129624 • 2011 (550F)
2011 to 2018 (600 & 600 E-TEC sea-level)

REX², XU
415129625 • 2012 (1200),
2012 to 2018 (600 E-TEC high altitude)

REX, REX², XU
415129626 • 2011 to 2018 (800R P-TEK &
800R E-TEC)
415129627 • 2008 to 2010 (800R P-TEK &
800R E-TEC)
415129708 • 2011 and prior (1200), 2011
and prior (600 E-TEC high altitude)

- Includes: 1 Spring Cover Ass'y, 3 Rollers Ass'y, 1 Bushing (Siding Flange),
- 6 Slider Shoes, 6 O-Rings, 1 Circlip, 3 Cotter Pins & 3 Lever Axles



NGK⁺ SPARK PLUGS

414961100 • BR9-ES
415128524 • 600 CARB & 800 P-TEK - BR9-ECS (Gap 0.8 mm)
415129432 • 600 H.O. E-TEC - PZFR6F
415129429 • 1200 4-TEC - CR8EKB
415129484 • 800R E-TEC - PFR7AB
415129670 • 600 ACE - MR7BI8
415129944 • 900 ACE - MR8BI8
415130154 • 850 E-TEC & 600R E-TEC - ILKR8Q
512059552 • 550F, 600RS - BR9ECS (Gap 0.5 mm)
512060029 • 600 CARB, 800R P-TEK - BR8ECS (Gap 0,8 mm)

- You'll see a difference with genuine NGK spark plugs.
- Solid steel terminal reduces the chance of arcing in the plug cap, which may interfere the electric component.
- A necessity in today's ignition system



PISTON KIT

415129406 • 593 HO including SDI
415129405 • 793 HO
415129854 • 800 E-TEC 2011 and prior
415129855 • 800 E-TEC 2012 and up
415129858 • 800R P-TEK and 800R E-TEC 2010
415129541 • 593
415129542 • 552

- Kit includes: piston, rings, piston pin, needle bearing and circlips.

COOLING

NEW

FRONT RADIATOR KIT

860202465
Provides additional cooling in extreme conditions. For Xterrain RE Turbo R model.



LYNX SHOVEL WITH SAW

860201918
RADIEN / RADIEN-X / REX² / XU

AIR RADIATOR KIT

860201860
Provides additional cooling in extreme conditions. For 600R and 850 E-TEC engines.

RADIEN / RADIEN-X 400 MM



ICE SCRATCHERS

860201728
Standard in BoonDocker DS models.
RADIEN / REX²



ICE SCRATCHERS

860201102
Wire shaped ice scratchers.
UNIVERSAL

UNIVERSAL

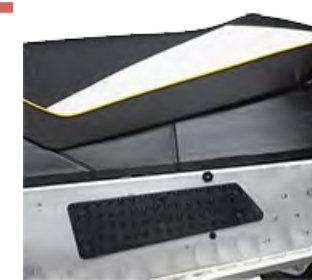


NEW

PULLING STRAP

860202382
Save your back and get unstuck the easy way.
Lightweight, compact, affordable. Extremely robust material.
Available in red only. 2 per pack.

RADIEN / RADIEN-X



TUNNEL GRIP PLATES

860200164



LOCKABLE FUEL CAP

619590085

BRP TOOL KIT

860202029
Casing fits perfectly in Deep Snow Seat Box with or without battery (860202028). Features high quality tools.

- Includes:
- Stainless steel open end wrenches; 8-10mm, 10-13mm, 12-14mm, 15-17mm, 16-19mm.



RACING BRAKE PADS

619690016

- 1/4 drive ratchet with 4" extension, hex 8 - 10 - 13 - 16, torx 25 - 30 - 40, allen 4 - 6 - 8, philips #2.
- Long nose vice grip.

RADIEN / RADIEN-X

EXPLORE AN ENTIRE WORLD OF ADVENTURE WITH ALL OF OUR BRP PRODUCTS. BRP.COM



ski-doo LYNX SEA-DOO CAN-AM ROTAX ALUMACRAFT Manitou EVINRUDE
